



3 Phase Electricity



Integral Office Space



On-Site Car Parking



UNIT 2, WHEATLEA INDUSTRIAL ESTATE

WHEATLEA ROAD | GOOSE GREEN | WIGAN | WN3 6XP

TO LET

WAREHOUSE/INDUSTRIAL UNIT

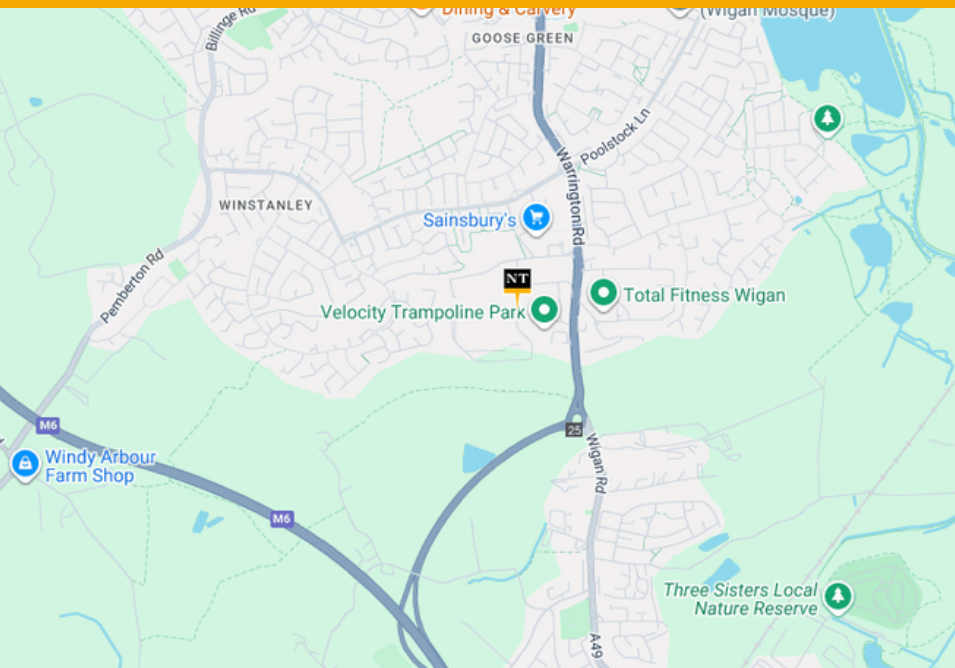
5,683 SQ FT

LOCATION

Located just south-west of Wigan town centre, Wheatlea Industrial Estate occupies a prime position within one of the area's most established commercial zones. The estate benefits from excellent transport links, sitting less than a mile from Junction 25 of the M6 and providing swift access to the wider North West motorway network, including the M58, M61, and M62 corridors.

Home to a diverse mix of national and regional occupiers, Wheatlea Industrial Estate continues to attract a broad range of businesses seeking a well-connected and proven industrial location.

UNIT 2, WHEATLEA INDUSTRIAL ESTATE



DESCRIPTION

Unit 2 provides 5,683 sq ft of modern industrial and warehouse space within the established Wheatlea Industrial Estate. The property combines a clear-span warehouse with integral office accommodation, supported by a secure service yard, loading access, and on-site parking.

Well-suited for storage, distribution, trade counter or light manufacturing use, it represents an excellent opportunity within a thriving business location.

VIEWING & FURTHER INFO

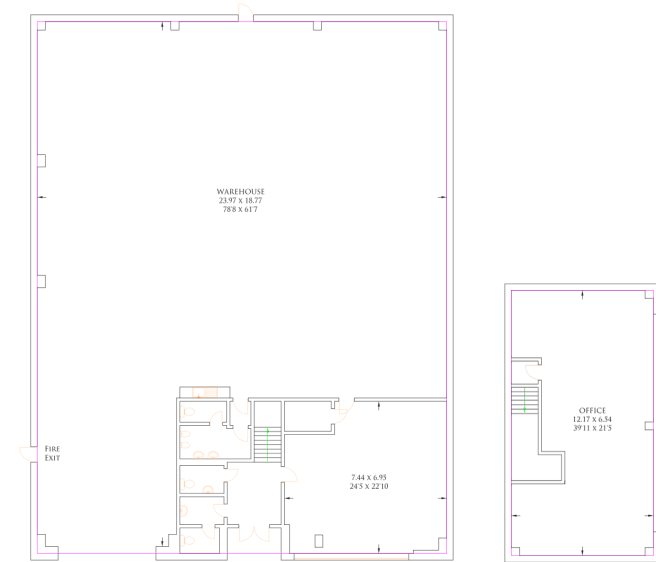
To arrange a viewing, please contact one of the letting agents.

TERMS

There are a range of flexible leasing options available. For further details, please contact us.

EPC

The EPC rating on this unit is A10. EPC certificate is available upon request.



northwest@northerntrust.co.uk

BUSINESS UNITS TO LET ACROSS THE UK

Follow us on



MISREPRESENTATION ACT: Northern Trust on behalf of proposing vendors or lessors and on their own behalf give notice that: (i) These particulars are set out as general information only for the assistance of intending purchasers or lessees. They do not constitute nor constitute part of an offer and will not be incorporated in any contract term; (ii) all descriptions, dimension, references to condition and necessary permissions for use and occupation, and other details are provided in good faith but without any liability of any kind on any proposing vendors or lessors. Any intending purchaser or lessee shall not rely on such information which is given on condition that any intending purchasers or lessors shall satisfy themselves by their own inspections or other enquires about the property in all respects; (iii) no partner and no person employed by Northern Trust has any authority to make any representation or give any warranty whatsoever in relation to this property whether on behalf of proposing vendors or lessors of Northern Trust. Designed by Northern Trust Company Limited. October 2025.